

## 7 SPECIMEN COLLECTION AND PREPARATION

### *Cervical Screening*

The department uses Hologic ThinPrep® LBC method of cervical cell sample preparation.

**Please note** - All sample takers **MUST BE** trained in using “ThinPrep” LBC Technique, and will require a Sample Taker code which can be obtained from the Cervical Sample Taker Database administrator on the website <http://www.cstd.neyhgarc.nhs.uk/> for more advice contact on 08009537610 or email [gan-tr.northcstd@nhs.net](mailto:gan-tr.northcstd@nhs.net)

#### 7.1 Patient Education

- Women should be counselled to refrain from:
  - Intercourse
  - Douching
  - Using tampons
  - Using intravaginal medication

for at least 48 hours before the examination to decrease the possibility that the number of exfoliated cells will be diminished or obscured by personal lubricants or spermicides. Ideally sample should be taken mid-cycle.

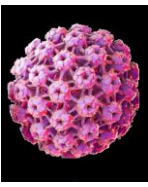
#### 7.2 Preparing to take the sample

- Prepare all equipment before starting the procedure
- Complete patient details on both the request form and the vial. **All samples should be requested via the Gateshead Screening Service ICE system where possible.** See section 5 - Instructions for the Completion of the Request Form.
- Note expiry date on sample collection vial. Do not use expired vials
- Ensure the entire seal is removed from the lid of the vial & discarded
- Specimens will be discarded if samples fail to meet acceptance criteria-see Section 4.



- Remove the lid from the vial before taking the sample





### 7.3 Options for lubricating the speculum

- **Lukewarm Water:** For a patient without physical or physiologic reasons for needing lubricant, lukewarm water may be used to warm and lubricate the speculum. This protocol has the **least risk** to the quality of the sample collected.
- **Lubricant Gels:** If lubricant must be used due to patient discomfort or other circumstances, lubricant should be used sparingly and applied **only** to the exterior sides of the speculum blades, **avoiding contact with the tip of the speculum**.
  - When a lubricant is used sparingly and appropriately, it poses little risk to the quality of the sample.
  - Use lubricants that do not contain carbomers
  - Carbomers tend to promote coagulation of inflammation cells and bacteria, which obscures epithelial cells and renders the test unsatisfactory for interpretation.
  - Carbomers also cause blockage of the Hologic filters
  - Examples of lubricants that **do not** contain carbomers:
    - ✓ K-Y Lubricating Jelly®
    - ✓ Surgilube®
    - ✓ Astroglide®
    - ✓ Crystelle®
    - ✓ Comfigel®
    - ✓ PELIjelly®
- Lubricant formulations containing carbomers which **SHOULD NOT** be used include: AquaGel, L-Gel, Aplicare, Optilube

### 7.4 Appropriate use of lubricant

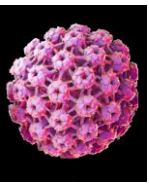
- If lubricant is used please follow the instructions below:

Apply a pea-sized amount of lubricant gel.



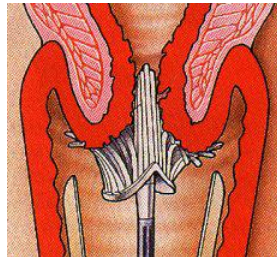
Apply only to exterior sides of the speculum, avoiding the tip.



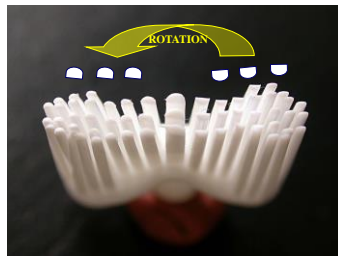


## 7.5 Obtaining the Sample

- Pass the speculum and visualise and assess the cervix
- Insert the central bristles of the brush into endocervical canal deep enough to allow the shorter outer bristles to fully contact the ectocervix



- Turn Cervex brush 5 times in a clockwise direction **using firm, constant pressure for the full 5 turns**

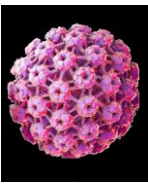


- Rinse brush immediately into the PreservCyt® Solution vial by pushing it into the bottom of the vial 10 times, forcing the bristles apart. If broom is not immediately '**mashed & bashed**' 10 times in the pot the cells will fix to the broom and the sample could be inadequate



- **Do not leave broom to sit in pot**
- As a final step, swirl the brush vigorously to further release material. Visually inspect the brush to ensure that no material remains attached. Discard the collection device.
- **Do not leave the head of the brush in the vial.**





- Screw the lid on until the black torque marks meet - **Do not over-tighten**



- **All samples should be requested via the Gateshead Screening Service ICE system where possible.** Print off ICE label and place the ICE label with the barcode vertically, not horizontally as displayed below:

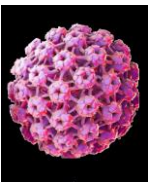


- Place the vial and the form in a clear specimen bag.
- Dispose of equipment and waste safely.
- Place the labelled vial in a clear specimen bag.
- Complete a tracking form – these are to be used to ensure chain of custody of the samples. Using the Tracking Form makes it easier to trace samples that may be delayed or missing.

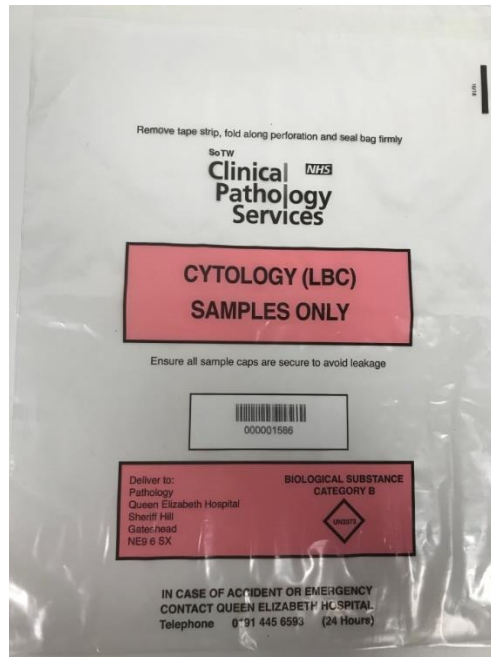
Complete details on the tracking form:

- Practice name; today's date; time
- Handwrite patient details or attach one ICE label (if your label printer prints 2 labels) in each box.
- Complete number of samples, name & signature
- Check that the details on the sample match those on the tracking forms as mismatched samples will be rejected.

Practice name		Date	Time
<b>Complete below:</b> Unit/NHS No: [ ] [ ] [ ] [ ] [ ] [ ] [ ] [ ] [ ] [ ] Surname: [ ] [ ] [ ] [ ] [ ] [ ] [ ] [ ] [ ] [ ] Forename: [ ] [ ] [ ] [ ] [ ] [ ] [ ] [ ] [ ] [ ] Date of Birth: [ ] [ ] [ ] [ ] [ ] [ ] [ ] [ ] [ ] [ ]		<b>Complete below:</b> Unit/NHS No: [ ] [ ] [ ] [ ] [ ] [ ] [ ] [ ] [ ] [ ] Surname: [ ] [ ] [ ] [ ] [ ] [ ] [ ] [ ] [ ] [ ] Forename: [ ] [ ] [ ] [ ] [ ] [ ] [ ] [ ] [ ] [ ] Date of Birth: [ ] [ ] [ ] [ ] [ ] [ ] [ ] [ ] [ ] [ ]	
<b>Complete below:</b> Unit/NHS No: [ ] [ ] [ ] [ ] [ ] [ ] [ ] [ ] [ ] [ ] Surname: [ ] [ ] [ ] [ ] [ ] [ ] [ ] [ ] [ ] [ ] Forename: [ ] [ ] [ ] [ ] [ ] [ ] [ ] [ ] [ ] [ ] Date of Birth: [ ] [ ] [ ] [ ] [ ] [ ] [ ] [ ] [ ] [ ]		<b>Complete below:</b> Unit/NHS No: [ ] [ ] [ ] [ ] [ ] [ ] [ ] [ ] [ ] [ ] Surname: [ ] [ ] [ ] [ ] [ ] [ ] [ ] [ ] [ ] [ ] Forename: [ ] [ ] [ ] [ ] [ ] [ ] [ ] [ ] [ ] [ ] Date of Birth: [ ] [ ] [ ] [ ] [ ] [ ] [ ] [ ] [ ] [ ]	
Total number of samples sent	Pink bag / box Packed by:	Print name: Practice/Clinic staff Signature:	Print name: Courier Signature:
<b>ZERO TOLERANCE – Samples that do not meet the National Acceptance policy will be rejected</b>			
<b>PROCESS – Key points:</b> Positively identify the patient Remember to complete the request in the presence of the patient Observe the National Acceptance policy when taking the sample Confirm the details with the patient including current address Ensure the sample container is labelled and in date. Seal the specimen in front of the patient Send to the laboratory promptly			<b>Any problems please contact the laboratory on:</b>  <b>0191 445 6549</b> or <b>0191 445 6564</b>
<b>For Laboratory use only:</b> Total number of samples received: [ ] [ ] [ ] [ ] [ ] [ ] [ ] [ ] [ ] [ ]		Print name: [ ] [ ] [ ] [ ] [ ] [ ] [ ] [ ] [ ] [ ] Signature: [ ] [ ] [ ] [ ] [ ] [ ] [ ] [ ] [ ] [ ]	
Comments: [ ] [ ] [ ] [ ] [ ] [ ] [ ] [ ] [ ] [ ]			
Document Name: CS-ADM-FOR-005.QE SoTW Cervical Screening Tracking Form			Author: T Johnson



- Place the sample and tracking form into pink transport bag



- **Please only place cervical samples in this bag**
- The courier will count the samples and sign the tracking form and place the tracking form in the bag and **SEAL** for transportation to the laboratory.
- There can be multiple tracking forms per pink bag
- The samples are checked on receipt when the bag is opened
- Any queries can be dealt with immediately
- Using the Tracking Form makes it easier to trace samples that may be delayed or missing.

## 7.6 HPV testing

All women will have a primary HR HPV screening test. Women should be counselled with respect to this HPV testing and advised that their primary test will be an HPV test. If the test is High Risk HPV negative they will remain on routine recall. Cytology will only be carried out on samples with an HR HPV positive result. If the reflex cytology test is positive the patient will be referred for colposcopy.